



Ymddiriedolaeth  
Genedlaethol  
National Trust



# Ffermio

dros natur

# Farming

for nature

## Rydyn ni'n gofalu am We care for



**157**

milltir o arfordir  
ysblennydd  
Cymru



miles of  
stunning  
Welsh coast



**240**

o denantiaethau  
fferm yr  
Ymddiriedolaeth  
Genedlaethol  
yng Nghymru

National Trust  
farm tenancies  
in Wales



**50,000**

hectar, mae  
**46,000** hectar  
ohonynt yn cael  
eu rheol trwy  
arferion ffermio

hectares of which  
**46,000** hectares  
are managed  
through farming  
practices





Ymddiriedolaeth Genedlaethol  
National Trust

#NTWales

# Dyma'r hyn rydyn ni'n ei gredu: We believe...



Mae **dyfodol byd natur** ynghlwm wrth **ddyfodol ffermio**



The **future of farming** is bound up with the **future of nature**

Mae angen gweld byd **natur fel ased** sy'n werthfawr i fodel busnes

**Nature** needs to be seen as an **asset** that helps the business model



Mae angen **amgylchedd naturiol** iach a mwy i'r wlad

The nation needs a healthy, more **natural environment**





## In Wales, by 2025....

**BIGGER** - Restore/create 4,600 ha of priority habitat (Currently 495ha)

**BETTER** - 100% of nationally / internationally significant nature/wildlife features scoring 'High' or 'Very High' (Currently 45%)

**MORE JOINED UP** – 50% of all our land in Wales achieves 'High Nature Status' (Currently 16%)



Consultation



Llywodraeth Cymru  
Welsh Government



## Brexit and our land: Securing the future of Welsh farming

Responses by 30 October 2018



## Summary of overall annual costs of meeting environmental land management priorities, based on current costs (£m)

	Eng.	NI	Scot	Wales	UK
Priority habitats	471	32	252	<b>120</b>	876
Boundary features	255	46	65	<b>35</b>	402
Historic environment	41	3	40	<b>7</b>	92
Arable land	353	14	40	<b>5</b>	411
Grassland	158	78	47	<b>28</b>	311
Organic farming	17	0	3	<b>5</b>	26
<b>Total</b>	<b>1,295</b>	<b>174</b>	<b>448</b>	<b>201</b>	<b>2,118</b>

*NT, RSPB & WT September 2017*



PORTH ES ALEN

TRAETH PO...

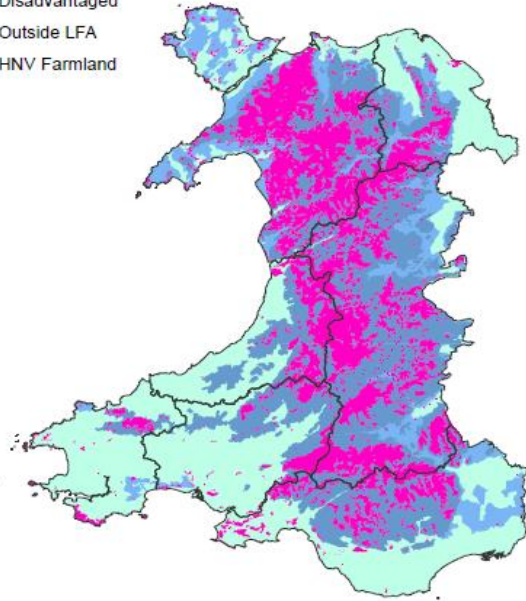
2M P

# High Nature Value Areas

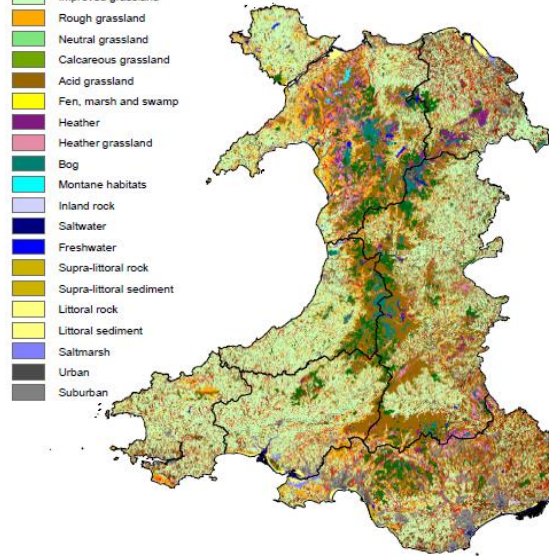
# Land Cover

# Protected

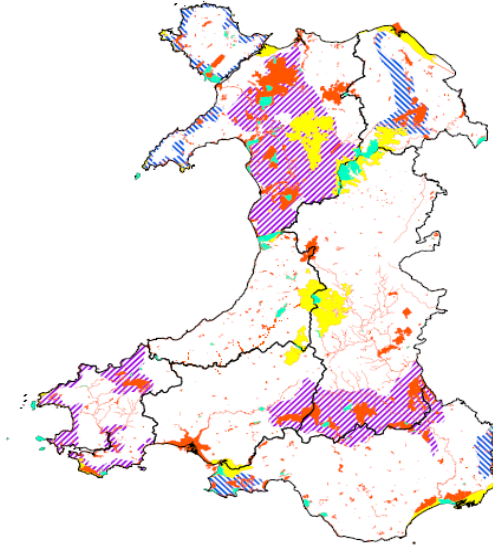
- Severely Disadvantaged
- Disadvantaged
- Outside LFA
- HNV Farmland



- Unclassified
- Broadleaved, mixed and yew woodland
- Coniferous woodland
- Arable and horticulture
- Improved grassland
- Rough grassland
- Neutral grassland
- Calcareous grassland
- Acid grassland
- Fen, marsh and swamp
- Heather
- Heather grassland
- Bog
- Montane habitats
- Inland rock
- Saltwater
- Freshwater
- Supra-littoral rock
- Supra-littoral sediment
- Littoral rock
- Littoral sediment
- Saltmarsh
- Urban
- Suburban



- National Nature Reserve
- Special Protection Areas
- Sites of Special Scientific Interest
- National Parks
- Areas of Outstanding Natural Beauty





Partneriaeth Tirlun

# Llŷn

Landscape Partnership



# Llŷn 'Payments for Outcomes' trial

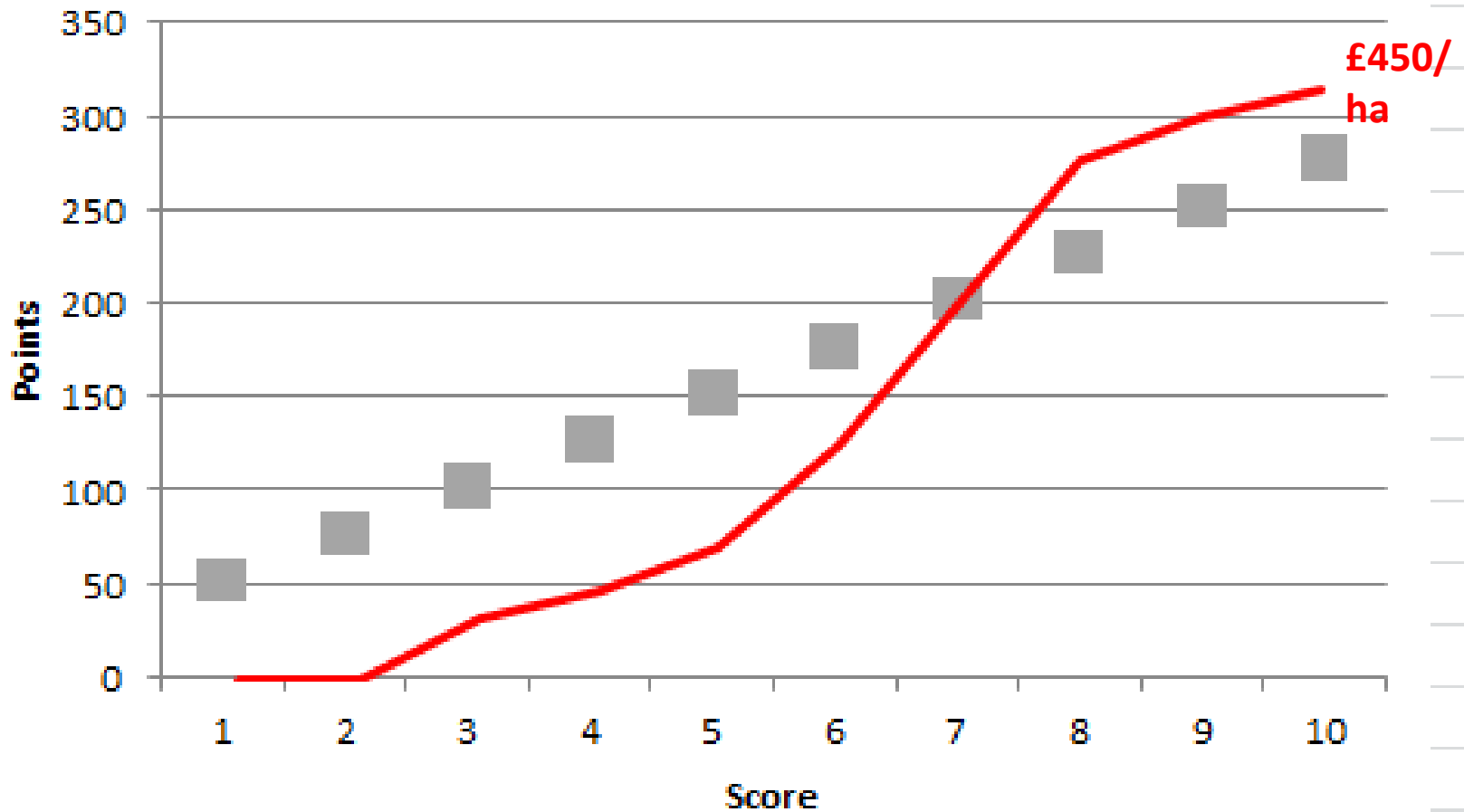
- |                                    |                    |
|------------------------------------|--------------------|
| • Coastal and unimproved grassland | • Arable           |
| • Hay Meadows                      | • Coastal cloddiau |
| • Semi-improved grassland          | • Hedges           |
| • Improved grassland               | • Water courses    |

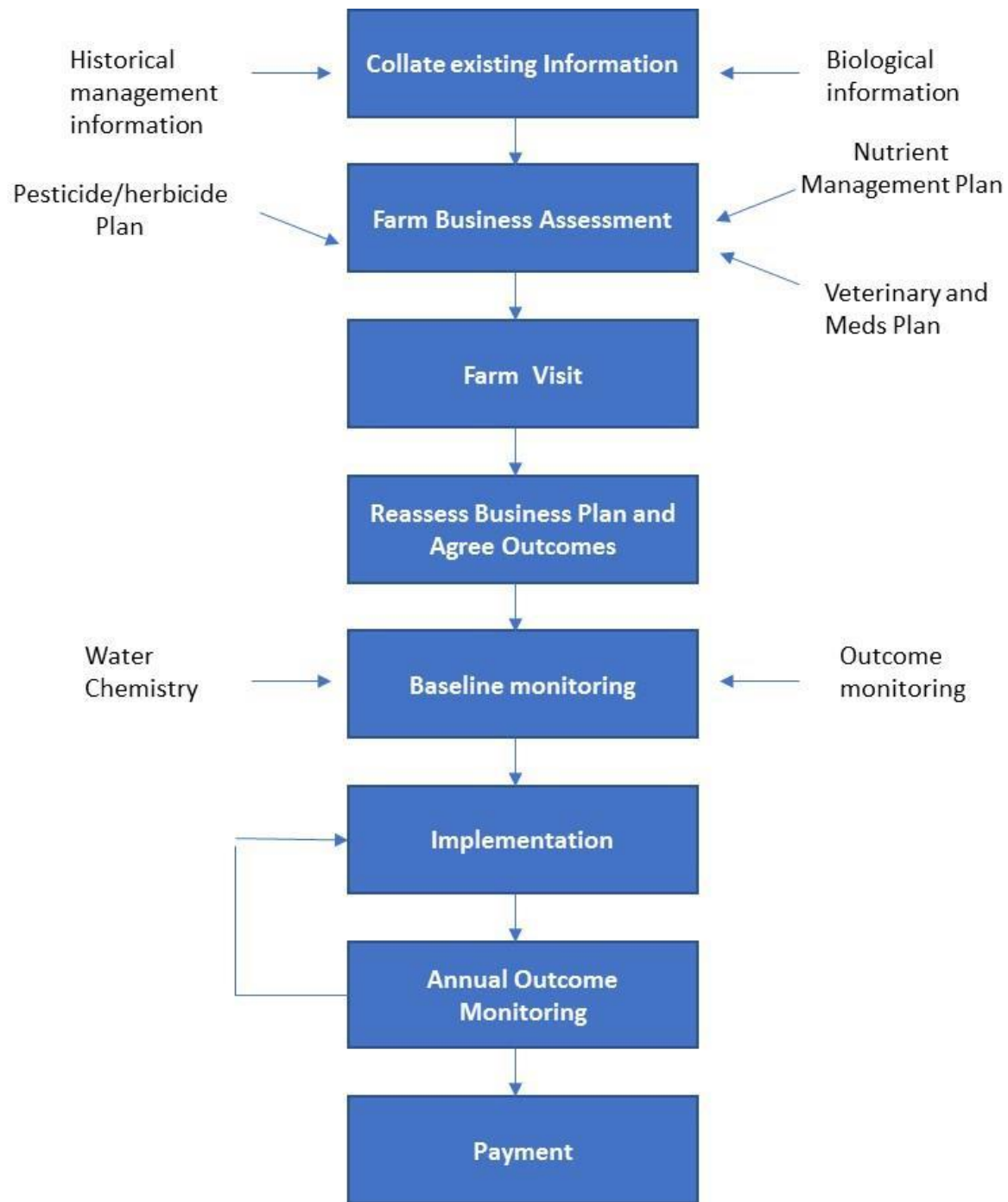
# Llŷn 'Payments for Outcomes' trial

## Coastal Grassland and Species-rich Pasture

<b>Sward able to flower (May to August) Insect pollinated flowers only (not negative indicators)</b>	Flowers widespread in more than 75% of sample	50
	Flowers frequent in 50- 75% of sample	30
	Flowers occasional in 25- 50% of sample	20
	Flowers rare; in less than 25% of sample	10
<b>Cover of herbaceous indicator species and sedges</b>	Cover of herbaceous indicator species and sedges exceeds 75%	50
	Cover of herbaceous indicator species and sedges is between 50% and 75%	40
	Cover of herbaceous indicator species and sedges is between 25% and 50%	30
	Cover of herbaceous indicator species and sedges is less than 25%	10

# Coastal Grassland and Species-rich Pasture – scoring and payment rate







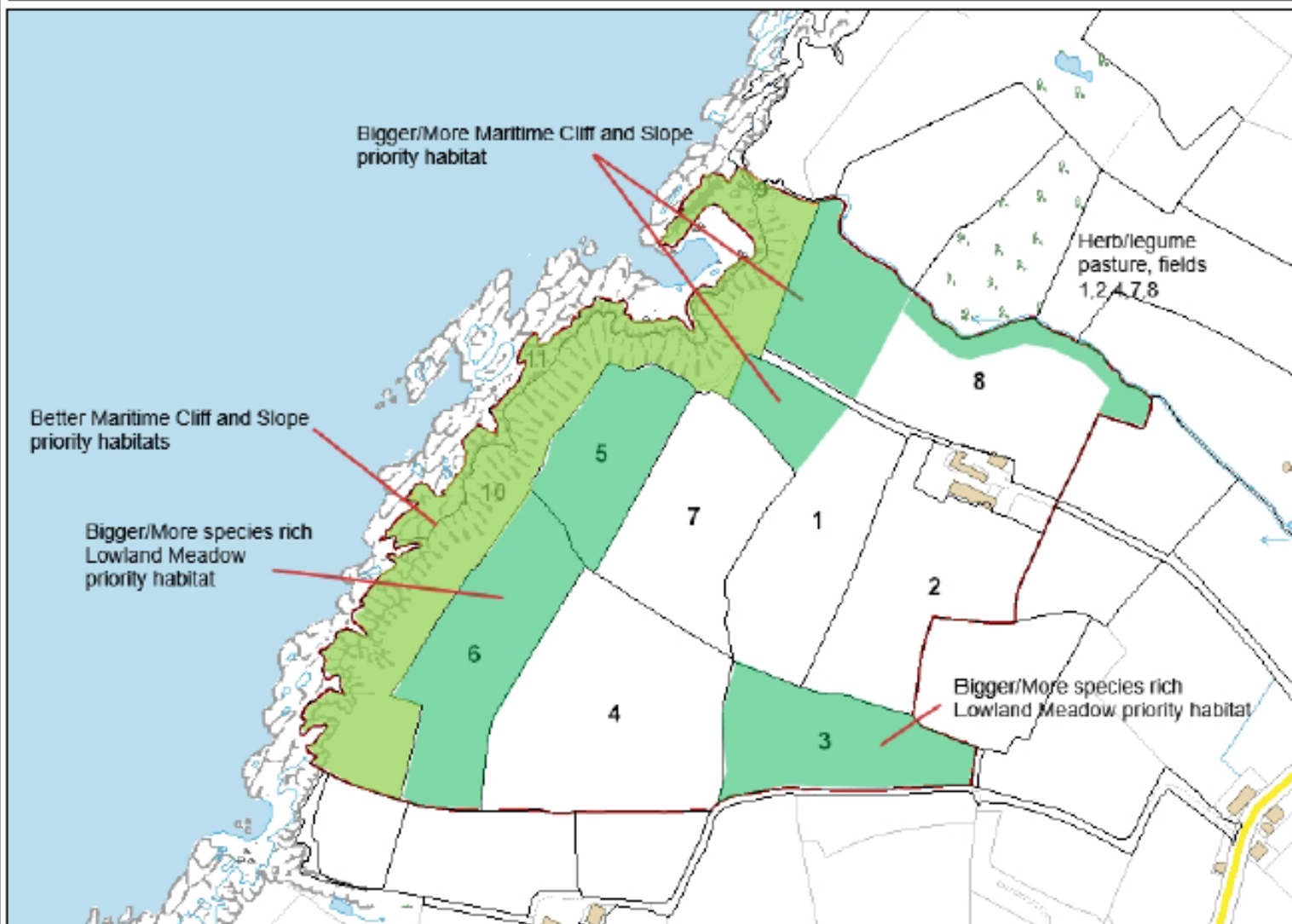
PORTH ES ALEN

TRAETH PO...

2M P



## Land Choices Porth Gwylan - desired land cover



### Legend

Property Component

1: 4,621



184.9 0 92.43 184.9 Meters

British\_National\_Grid  
© Crown copyright and database rights 2017 Ordnance Survey 100023974

This map is a user generated static output from an intranet mapping site and is for reference only. Data layers that appear on this map may or may not be accurate, current, or otherwise reliable.

THIS MAP IS NOT TO BE USED FOR NAVIGATION

### Notes

This map was automatically generated using the National Trust GIS Browser







Ymddiriedolaeth  
Genedlaethol  
National Trust

**Diolch yn fawr**

**[andrew.tuddenham@nationaltrust.org.uk](mailto:andrew.tuddenham@nationaltrust.org.uk)**

